

**Le Guide de l'Utilisateur**  
**Bedienungsanleitung**  
**Guía del Usuario**  
**Guida dell'Utente**  
**Manual do Usuário**

**日本語**



Shure BETA53

BETA54

### BETA53

- 
- 
- 
- 
- 
- 

“ ”

TA4F

### BETA54

- 
- 
- 
- 
- 
- 

(SPL)

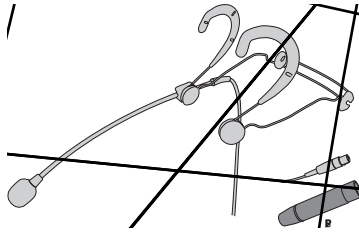
(SPL)

TA4F

Beta53

- 
- 
- 
- 
- 

- WBH53B
- WBH53T



TA4F

	1
	2
	2
	2
	1
	2
	1
	1

Beta54

- 
- 
- 
- 
- 

- WBH54B
- WBH54T

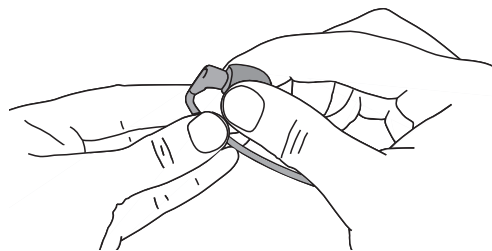
	1
	2
	2
	1
	2
	1
	1



TA4F



•  
•

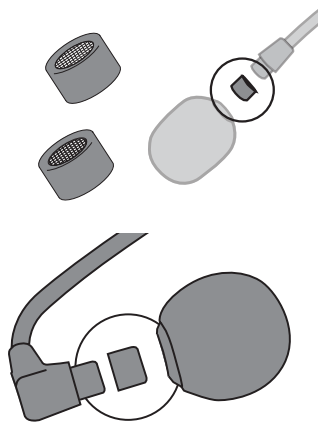



•  
•

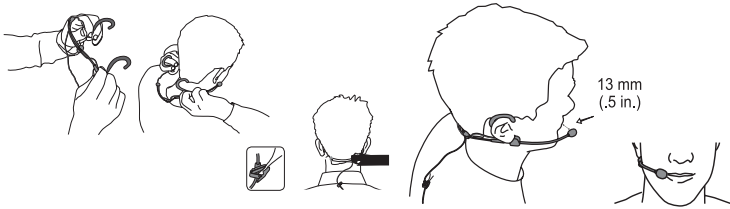
•  
•

•  
•

BETA54



## BETA53/54



- BETA53
- BETA54

## BETA 53 / WBH53 / RPM627

20 20,000

(RPM627)

160

1kHz

BETA 53	-54.0	/	(3.16)	[1]
WBH53	-54.0	/	(2.0)	[1]

1% THD 1 [2]

BETA 53	139.4 dB
WBH53	150.5 dB

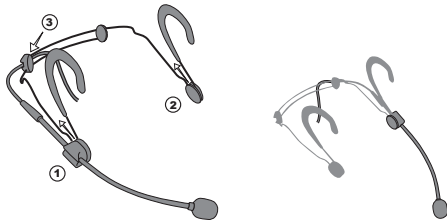
[3]

55.0 dB

1kHz

BETA 53	96.9 dB
WBH53	108 dB

42.5 dB, A-



BETA 53	11-52 V DC	[4], 2 mA
WBH53	+5	

BETA 53	3	2
WBH53	1	3

BETA 53	135 (4.75 )
WBH53	35 (1.25 )

1.5 (5 )

[1] 1 Pa=94 dB SPL

[2] THD of microphone preamplifier when applied input signal level is equivalent to cartridge output at specified SPL

[3] S/N ratio is the difference between 94 dB SPL and equivalent SPL of self-noise, A-weighted

## BETA 54 / WBH54 / RPM627

50 20,000

(RPM627)

160

60

1kHz

BETA 54	-56.0 / (2.51 ) [1]
WBH54	-56.0 / (1.58 ) [1]

1% THD 1 [2]

BETA 54	141.4 dB
WBH54	152.5 dB

[3]  
55.0 dB

1kHz

BETA 54	98.3 dB
WBH54	109.4 dB

, A-  
43.1 dB

BETA 54	11-52 V DC	[4], 2 mA
WBH54	+5	

BETA 54	3	2
WBH54	1	3

BETA 54	135 (4.75 )
WBH54	35 (1.25 )

1.5 (5 )

[1] 1 Pa=94 dB SPL

[2] THD of microphone preamplifier when applied input signal level is equivalent to cartridge output at specified SPL

[3] S/N ratio is the difference between 94 dB SPL and equivalent SPL of self-noise, A-weighted

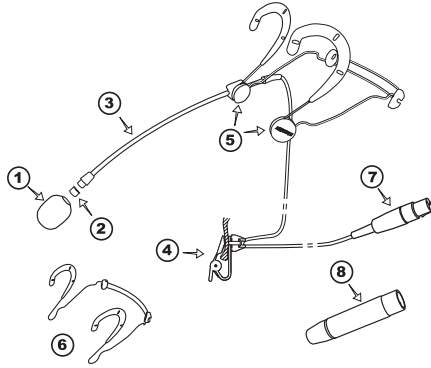
CE

“CE” [www.shure.com/europe/compliance](http://www.shure.com/europe/compliance)

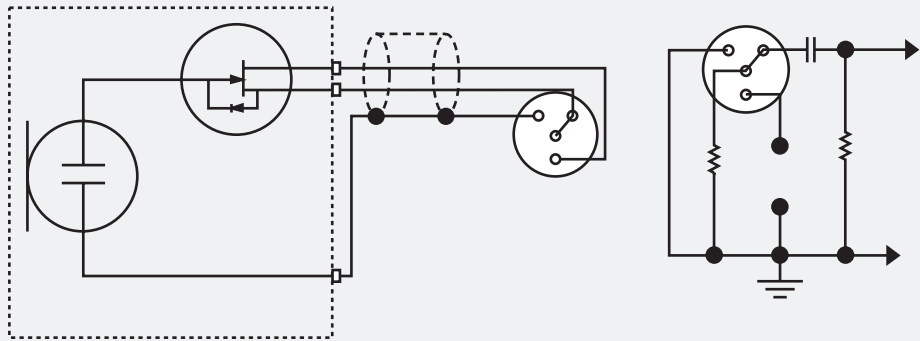
Shure Europe GmbH

Jakob-Dieffenbacher-Str.12  
75031 Eppingen, Germany  
49-7262-92 49 0  
49-7262-92 49 11 4  
info@shure.de

BETA53



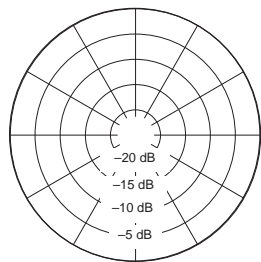
1	5	RPM304	RPM306
2	5	RPM208	RPM212
	* 5	RPM220	RPM214
3	/ TA4F 1	RPM132	RPM134
4	5	RPM510	RPM512
5	2	RPM570	RPM580
6	1	RPM550	RPM560
7	4 (TA4F) 1	WA333	
8	1	RPM627	



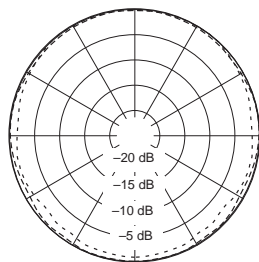
Circuit d'essai sans fil

1. 赤色
2. 黒色 (音声出力)
3. シールド (アース)
4. ケース (アース)
5. マイクロホンカートリッジ
6. ワイヤレス試験回路

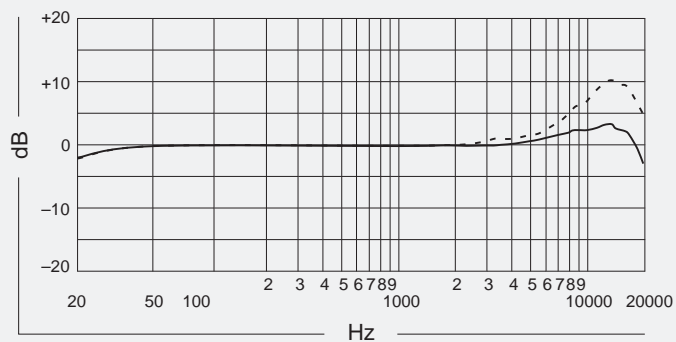
## BETA 53



- - - - - 250 Hz  
 - - - - - 500 Hz  
 ——— 1000 Hz

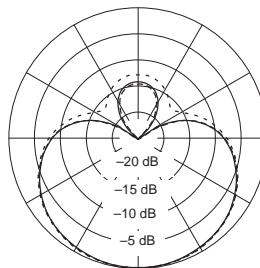


——— 2.5 kHz  
 - - - - - 6.3 kHz  
 - - - - - 10 kHz

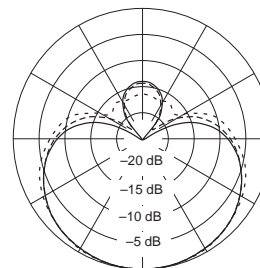


- - - - -  
 ———

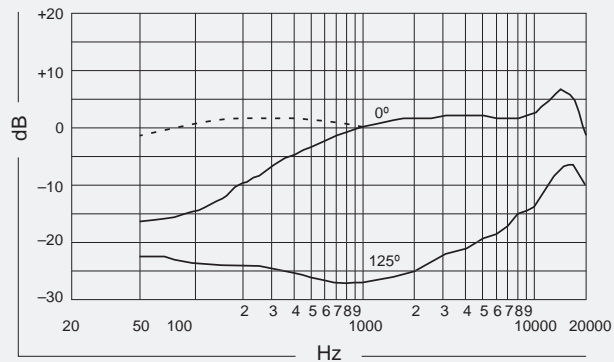
## BETA 54



- - - - - 250 Hz  
 - - - - - 500 Hz  
 ——— 1000 Hz



——— 2.5 kHz  
 - - - - - 6.3 kHz  
 - - - - - 10 kHz



15 mm (.6 in) - - - - -  
 606 mm (2 ft) ———

Capuchon à filtre

Gefilterte Kappe

Tapa con filtro

Cappuccio dotato di filtro

標準キャップ<sup>1</sup>  
フィルタ付きキャップ<sup>2</sup>

Patent Notice: Patent Des. 451,902

